

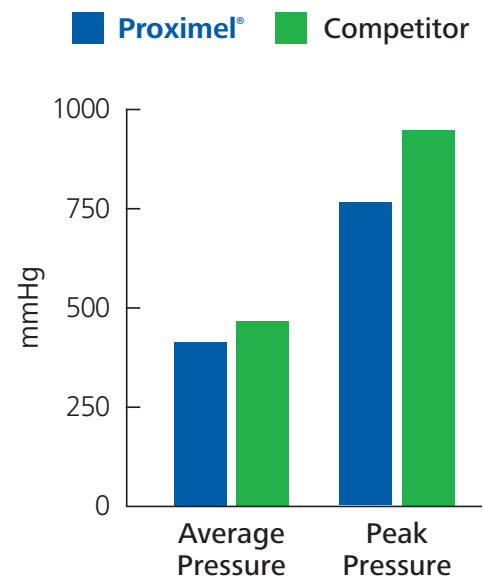
Proximel[®]: A new option to support pressure injury prevention

The prevention of hospital acquired pressure ulcers remains a significant clinical challenge in today's healthcare environment. It is estimated that more than **2.5 million Americans develop pressure ulcers each year and that up to 60,000 individuals die** from complications.¹



Published guidelines support the consideration of applying a polyurethane foam dressing to bony prominences for the prevention of pressure ulcers in anatomical areas frequently subjected to friction and shear.²

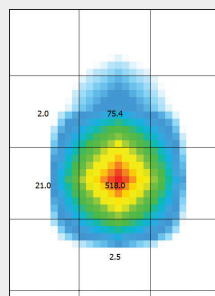
Proximel[®] vs. Leading Competitor³ REDUCES AND REDISTRIBUTES PRESSURE



Results from a Simulated Skin Pressure Test⁴

Before:

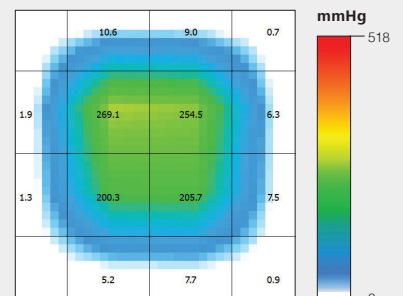
If exposed for a prolonged period of time, areas at risk for developing pressure ulcers can experience higher peak pressure and limited pressure redistribution.



PRESSURE MAP WITHOUT WOUND DRESSING

After:

Applying a Proximel[®] Silicone Foam Dressing reduces peak pressure points and redistributes pressure across its placement.



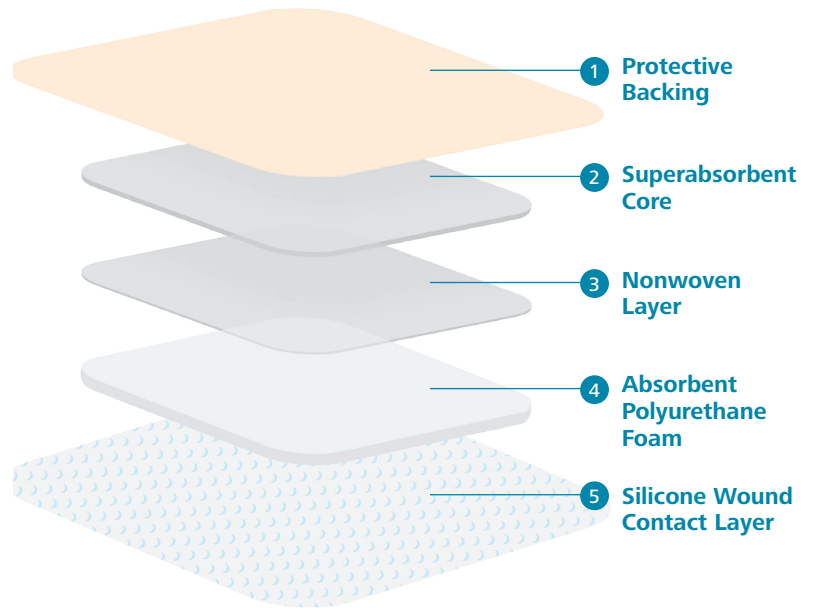
PRESSURE MAP WITH PROXIMEL[®] SILICONE FOAM DRESSING

1. Are we ready for this change? Content last reviewed October 2014. Agency for Healthcare Research and Quality, Rockville, MD. <http://www.ahrq.gov/professionals/systems/hospital/pressureulcertoolkit/putool1.html>
 2. Emily Haesler, editor. National Pressure Ulcer Advisory Panel, European Pressure Ulcer Advisory Panel and Pan Pacific Pressure Injury Alliance. Prevention and Treatment of Pressure Ulcers: Quick Reference Guide. Perth: Cambridge Media; 2014.
 3. Simulated with steel ball
 4. Data on file

A five-layer design that can support your care plan for pressure injury prevention

Proximel® silicone foam dressing stays in place during routine skin or wound checks while promoting healing and supporting prevention protocols.

Proximel® five-layer design



Reduces and redistributes pressure across the surface to reduce both peak and overall level of force.



Proximel's distinctive properties allow you to confidently **lift and reposition** the dressing while reducing the risk of adherence failure.



High MVTR rate supports good moisture balance.



Superabsorbent core supports **fast absorption** and helps minimize maceration risk.

Proximel®

Order Number	Description	Dressings per Box
14100000	Proximel® Silicone Dressing with Border, 3"x3"	10
14200000	Proximel® Silicone Dressing with Border, 4"x4"	10
14300000	Proximel® Silicone Dressing with Border, 5"x5"	10
14400000	Proximel® Silicone Dressing with Border, 6"x6"	5
14500000	Proximel® Silicone Dressing with Border, 4"x12"	5
14600000	Proximel® Silicone Dressing with Border, Small Sacrum	5
14700000	Proximel® Silicone Dressing with Border, Large Sacrum	5
14800000	Proximel® Silicone Dressing with Border, Heel	5



SQUARE

14100000-14400000



POST-OP

14500000



SACRUM

14600000-14700000



HEEL

14800000

Contact your local HARTMANN representative, or visit us at www.hartmannusa.com for more information.

HARTMANN USA, Inc.
Rock Hill, SC 29730
1-800-243-2294



Going further
for health